

TYPICAL GUEST FLOOR  
ICE MACHINE DETAIL

EQUIPMENT SCHEDULE					
ITEM NO	QTY	EQUIPMENT CATEGORY	MANUFACTURER	MODEL NUMBER	EQUIPMENT REMARKS
01	3	WIRE SHELVING - DRY STORAGE	EAGLE GROUP		86"H 5 TIER
02	1	WIRE SHELVING - LIQUOR STORAGE	EAGLE GROUP		86"H 5 TIER
03	1	MOP SINK	BY GC	NIKEC	
04	1	SHELF AND MOP RACK	EAGLE GROUP	US0824-16/3	
05		SPARE NUMBER			
06		SPARE NUMBER			
07	1	REACH IN REFRIGERATOR	HOSHIZAKI	CR2S-FS	
07.1	2	REACH IN REFRIGERATOR	HOSHIZAKI	CR1S-FS	
08	1	REACH IN FREEZER	HOSHIZAKI	CF2S-FS	
08.1	2	REACH IN FREEZER	HOSHIZAKI	CF1S-FS	
09	1	S/S WORKTABLE W/SINK & DRAWER	EAGLE GROUP	T3084SEB-BS	INCLUDES FAUCET
10	1	SHELF, WALL MOUNT	EAGLE GROUP	WS1524-16/4	
11	2	SHELF, WALL MOUNT	EAGLE GROUP	WS1560-16/4	
11.1	1	SHELF, WALL MOUNT	EAGLE GROUP	WS1536-16/4	
12	1	SINK, NSF, 3 COMP, 16 GAUGE	EAGLE GROUP	SPECFAB	
13	1	POT RACK, WALL MOUNT	EAGLE GROUP	WSP1284	
14	1	CLEAN DISHTABLE	EAGLE GROUP	CDTL-36-14/3	
15	1	WIRE SHELVING - DISH STORAGE	EAGLE GROUP		86"H 5 TIER
16	1	CONDENSATE HOOD	CAPTIVE-AIRE	CUSTOM-HSH	
16.1	1	EXHAUST FAN FOR CONDENSATE HOOD	BY OTHERS	NIKEC	
17	1	HIGH TEMP DISHMACHINE	CHAMPION	DH2000	
18	1	SOILED DISHTABLE	EAGLE GROUP	SDTR-36-14/3	
18.1	1	PRE-RINSE FAUCET	T & S BRASS	B-0113-B	
19	1	DISHABLE, SORTING SHELF	EAGLE GROUP	606296	
20	1	SPARE NUMBER	BY OTHERS	NIKEC	
21	2	HAND SINK, WALL MOUNT	EAGLE GROUP	HSAN-10-F-LRS-2X	W/WRISTBLADE HANDLE
22		SPARE NUMBER			
23	2	SHELF, WALL MOUNT	EAGLE GROUP	WS1518-16/4	
24	1	EXHAUST HOOD - TYPE 2	CAPTIVE-AIRE	CUSTOM-HSH	
25	1	EXHAUST AND SUPPLY FANS FOR ITEM 24	BY OTHERS	NIKEC	
26	1	SANDWICH/SALAD PREP	HOSHIZAKI	CRMR60-24M	
27		SPARE NUMBER			
28		SPARE NUMBER			
29		S/S PASS SHELF W/TRIM	EAGLE GROUP	SPECFAB	18" X 54"
29.1		HEAT LAMP	HATCO	GRAH-48D3	
30	1	POS SYSTEM PRINTER	BY OWNER		
31	1	PIZZA OVEN	LINCOLN	2501-4/1346	
32	1	REFRIGERATOR, WORKTOP	HOSHIZAKI	CRMR60-W	
33	1	STEAMER	SOUTHBEND	R18A-4M	AUTO FILL & MANUAL DRAIN, WATER FILTER
33.1	1	STEAMER STAND	EAGLE GROUP	T3024SE	
33.2	1	WATER FILTER	SOUTHBEND	1400712	
34	1	MICROWAVE/CONVECTION COMBI OVEN	MERRYCHEF USA	E4-HSH	
35	1	REFRIGERATOR, UNDERCOUNTER	HOSHIZAKI	CRMR48-01	W/LOW PROFILE CASTERS & CYLINDER LOCKS
36	1	S/S WORKTABLE	EAGLE GROUP	T3084STB-BS	
37	1	HOLDING CABINET	ALTO-SHAAM	500S	
38		SPARE NUMBER			
39		SPARE NUMBER			
40	LOT	S/S CORNER GUARDS	EAGLE GROUP	CG-0-48	
41		SPARE NUMBER			
42	1	OVEN, MICROWAVE	PANASONIC	NE-1064F	NOT USED AT BREAKFAST
43		SPARE NUMBER			
44		SPARE NUMBER			
45	1	HEATED SHELF	BSI	HTD-INF-48-HSH	
46	1	OVERHEAD MILLWORK CABINETS	BY MILLWORK		
47	1	LOWER MILLWORK CABINETS	BY MILLWORK		
48		SPARE NUMBER			
49		SPARE NUMBER			
50	1	SNEEZEGUARD W/HEATLAMP	BSI	CUSTOM-HSH	
51	3	DROP-IN, FROST TOP	HATCO	FTB-S2	
52		SPARE NUMBER			
53	1	POS SYSTEM ENTRY TERMINAL	BY OWNER		
54	1	SNEEZEGUARD	BSI	CUSTOM-HSH	
55	2	WAFFLE IRON	BY OWNER		
56	1	DROP-IN, HOT WELLS	WELLS	SS-8TDU	PLUMBER TO SUPPLY SHUT OFF VALVE
56.1	1	OATMEAL CONDIMENTS	BY OWNER		
57	1	FROST TOP	HATCO	FTB 3/4-HSH	
58	1	TOASTER, CONVEYOR	HATCO	TQ-800-HSH	BLACK FINISH AND SECURITY COVER
59	1	CEREAL DISPLAY	BY OWNER		
60	1	S/S WORKTABLE W/SINK	EAGLE GROUP	T3084STEB-BS	INCLUDES FAUCET
61	1	BREAD DISPLAY	BY OWNER		
62	1	JUICE DISPENSER	BY OWNER		WITH 4 DISPENSER HEADS
62.1	1	WATER FILTER FOR ITEM 62	BY OWNER		
63	1	COFFEE BREWER	BUNN BY OWNER	DUAL TF DBC SST	
63.1	1	WATER FILTER FOR ITEM 63	BY OWNER		
64	2	TRASHCAN	BY OWNER		
65	1	GLASSWASHER	CHAMPION	UH130B	
66	1	REFRIGERATOR, UNDERCOUNTER	HOSHIZAKI	CRMR48-01	W/LOW PROFILE CASTERS & CYLINDER LOCKS
67	1	REFRIGERATION RACK	COOLTEC	CUSTOM	FOR ITEM (1)#69, (1)#69.1, (1)#74, (1)#79
68	1	MICROWAVE/CONVECTION COMBI OVEN	MERRYCHEF USA	E2	
69	1	BACKBAR REFRIGERATOR	PERLUCK	BBR48	WITH 1 GLASS DOOR, 1 S/S DOOR
69.1	1	BACKBAR REFRIGERATOR	PERLUCK	BBR48	WITH GLASS DOORS
70	1	MILLWORK LOW WALL W/COUNTER TOP	CUSTOM	CUSTOM	
71	1	MILLWORK CABINETRY W/COUNTER TOP	CUSTOM	CUSTOM	
72	1	ICE MAKER W/BIN	HOSHIZAKI	AM-50BAE	
73	1	ESPRESSO MACHINE	VERISMO - BY OTHERS	701 - NIKEC	
73.1	1	WATER FILTER	INCLUDED WITH #73	NIKEC	
74	1	BACKBAR REFRIGERATOR	PERLUCK	BBR48	
74.1	1	BEER DISPENSING KIT	PERLUCK	69526-4TT	
75	1	UNDERBAR ICE CHEST W/SPEED RAIL	PERLUCK	TS24IC/SR-S24/SR-H24R	
76	1	UNDERBAR DUMP SINK	PERLUCK	TS18BLW	
77	2	UNDERBAR DRY STORAGE	PERLUCK	SC24	
78	1	UNDERBAR HANDSINK	PERLUCK	TS12HSN	
79	1	REFRIGERATED DISPLAY CASE	STRUCTURAL CONCEPTS	B32 - REMOTE	
GF1	VER	GUEST ICE MACHINE W/BIN AND FILTER	HOSHIZAKI	KM-320MAH/DB-200H	NOT SHOWN ON PLAN
		ICE MACHINE FILTER	HOSHIZAKI	H9320-51	NOT SHOWN ON PLAN

REV.	DATE	DESCRIPTION
1		
2		
3		
4		
5		
6		
7		
8		
9		
10		

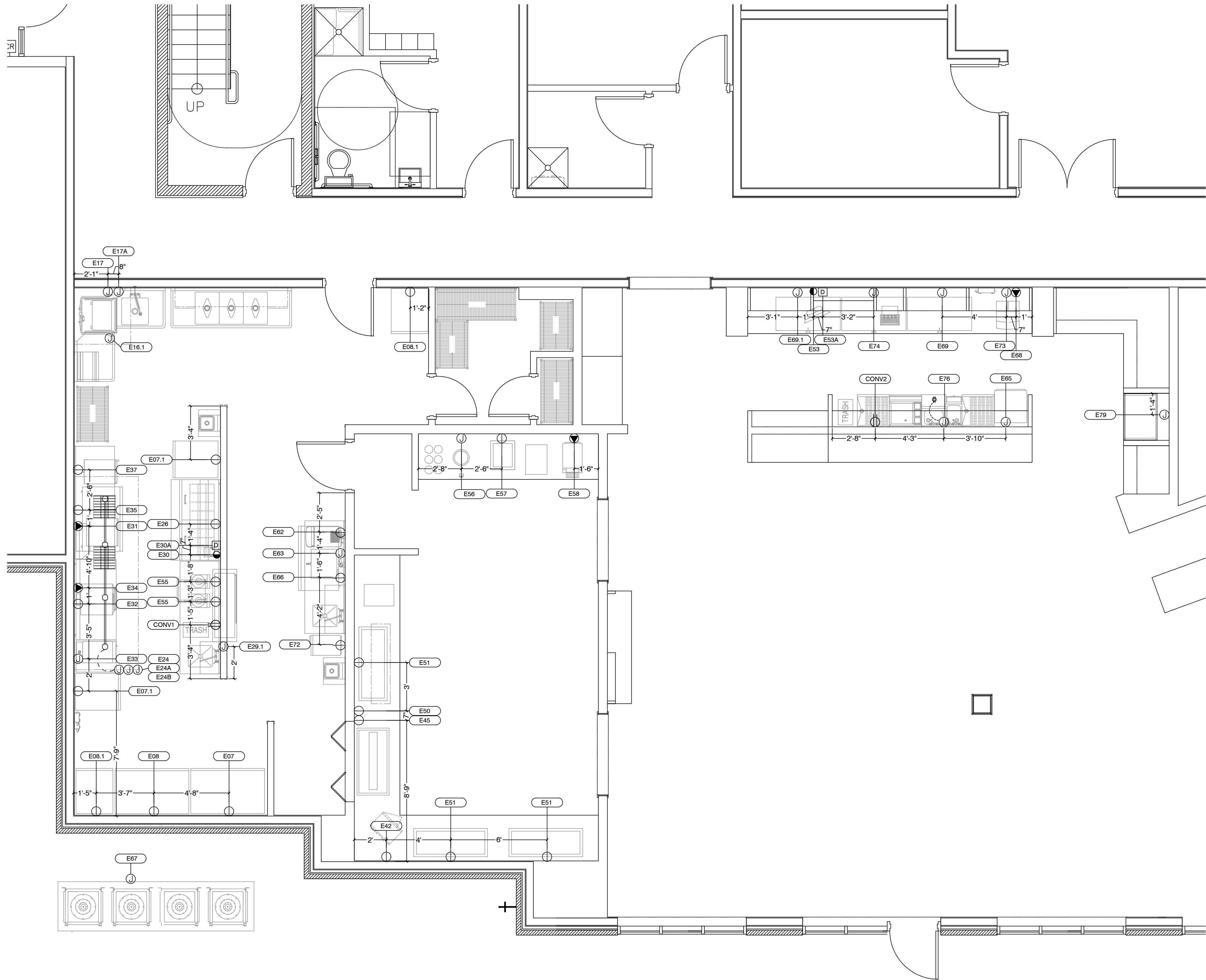
Orlando Division - 31  
2 West Oakland Ave, Oakland FL 34760  
P-407-656-2060 F-407-656-2126  
Toll Free 866-556-1418

**TriMark**  
Gill Group

**HYATT PLACE**  
FLINT, MI

JOB NAME: HYATT PLACE  
SHEET NAME: FOODSERVICE EQUIPMENT PLAN & SCHEDULE

KEYS: 122  
DRAWING BY: SB  
CHECKED BY: BM  
ISSUE DATE: 06.06.2017  
SCALE: 1/4" = 1'0"  
SHEET NO. **FS1**



KITCHEN ELECTRICAL SCHEDULE

ITEM #	EQUIPMENT	Q T Y	V O L T S	P H A S E	LOAD			STUB A.F.F. TO CENTER		E.C. TO MAKE FINAL CONNECTION TO			24 HOUR LOAD	COMMENTS
					AMP	K.W.	H.P.	JUNC. BOX	FLUSH OUTLET	EQ. MTD. J-BOX	EQ. MTD. OUTLET	OUTLET/TUB BY E.C.		
E07	REFRIGERATOR	1	120	1	5.8				72"			*		NEMA 5-15P
E07.1	REFRIGERATOR	2	120	1	4				72"			*		NEMA 5-15P
E08	FREEZER	2	120	1	11.1				72"			*		NEMA 5-15P
E08.1	FREEZER	2	120	1	9				72"			*		NEMA 5-15P
E16.1	CONDENSATE FAN	1	120	1	8.1			ROOF		*		*		BY OTHERS--SEE CAPTIVE AIRE DRAWNGS--EC TO INTERCONNECT FAN W/DW
E17	DISHWASHER	1	208	3	50.1			60"				*		EC TO PROVIDE MIN. 60 A MAX PROTECTION DEVICE. -- OUT OF WALL
E17A	DISHWASHER	1	120	1	20			24"		*		*		EC TO INTERCONNECT FAN WITH DISHWASHER
E24	LIGHTS	1	120	1	20.0				INT.	FROM ABOVE		*		E.C TO WIRE IN FIELD
E24A	EXHAUST FAN CONTROL	1	120	1	VER		VER			FROM ABOVE		*		E.C TO WIRE IN FIELD
E24B	SUPPLY FAN CONTROL	1	120	1	VER		VER			FROM ABOVE		*		E.C TO WIRE IN FIELD
E26	SANDWICH/SALAD PREP	1	120	1	4.2			24"				*		NEMA 5-15P
E29.1	HEAT LAMP	1	208	1	10.6	2.2		+CLG				*		EC TO CONNECT TO HEATLAMP AT PASS THRU
E30	P.O.S.	1	120	1	20.0			64"				*		OUT OF WALL -- SEE NOTE 1. -- I.G.
E30A	P.O.S. DATA	1						64"				*		SEE NOTE 1.--EXTEND BACK TO CHEFS OFFICE.
E31	CONVEYOR OVEN	1	208	1	27	6		48"				*		NEMA 6-50P
E32	WORKTOP REF.	1	120	1	4.2			24"				*		NEMA 5-15P
E33	STEAMER	1	208	3	27.8	9		48"				*		NEMA 6-30P
E34	MICROWAVE OVEN	1	208	1	30	6.2		48"				*		NEMA 5-15P
E35	U/C REFRIGERATOR	1	120	1	2.6			24"				*		NEMA 5-15P
E37	WARMING CABINET	1	120	1	8	.96		24"				*		NEMA 5-15P
E42	MICROWAVE	1	120	1	13.4	1		48"				*		NEMA 5-15P
E45	HEATED SHELF	1	120	1	6.6			24"				*		NEMA 5-15P MOUNT REMOTE CONTROL IN CABINET
E50	HEATLAMP	1	120	1	16.06			24"				*		NEMA 5-15P -- SEE SECTION 2 ON SHEET FS4
E51	FROST TOP	3	120	1	6.7	.8		24"				*		NEMA 5-15P
E53	P.O.S.	1	120	1	20.0			54"				*		SEE NOTE 1. -- I.G.
E53A	P.O.S. DATA	1						54"				*		SEE NOTE 1.--EXTEND BACK TO CHEFS OFFICE.
E55	WAFFLE IRON	2	120	1	8.3			48"				*		VERIFY REQUIREMENTS WITH SUPPLIER
E56	HOT FOOD WELL	1	120	1	6.9	.825		18"				*		
E57	FROST TOP	1	120	1	7		1/4	18"				*		NEMA 5-15P
E58	TOASTER	1	208	1	16	4		44"				*		NEMA 6-20P
E62	JUICE	1	120	1	15			48"				*		VERIFY REQUIREMENTS WITH SUPPLIER
E63	COFFEE	1	120/208	3	29			48"				*		VERIFY REQUIREMENTS WITH SUPPLIER
E65	GLASSWASHER	1	208	3	34.9			14"				*		
E66	U/C REFRIGERATION	1	120	1	2.6		1/6	18"				*		NEMA 5-15P
E67	REFRIGERATION RACK	1	208	1	31.1			ROOF				*		REMOTE CONDENSERS ON ROOF
E68	MICROWAVE OVEN	1	208	1	20	6.25		24"				*		NEMA 6-20P
E69	BACKBAR REF.	1	120	1	1.6			24"				*		
E69.1	BACKBAR REF.	1	120	1	1.6			24"				*		
E72	ICE MACHINE	1	120	1	3.4			24"				*		NEMA 5-15P
E73	ESPRESSO	1	208/240	1	30			54"				*		SUPPLY PLUG AND RECEPTACLE
E74	BACKBAR REF.	1	120	1	2			24"				*		
E76	BLENDER STATION	1	120	1	15			14"				*		OUT OF BAR DIE WALL -- EC TO BRANCH TO EQ. MTD. GFI RECEPTACLE
E79	REFRIGERATED CASE	1	120	1	1.49			24"				*		
CONV1	CONVENIENCE OUTLET	1	120	1	20.0			45"				*		NEMA 5-15P G.F.C.I. -- OUT OF WALL
CONV2	CONVENIENCE OUTLET	1	120	1	20.0			24"				*		NEMA 5-15P G.F.C.I.
GFI	QUEST ICE MACHINE	VER	120	1	10.8			60"				*		NOT SHOWN ON PLAN
GFI	QUEST ICE DISPENSER	VER	120	1	1.6			48"				*		NOT SHOWN ON PLAN

SYMBOLS AND NOTES

⊙ SR.	SINGLE RECEPTACLE (120v.)	⊙ SR.	SINGLE RECEPTACLE (120v.) ISOLATED GROUND	KW.	KILOWATT
⊕ DUP.	DUPLEX RECEPTACLE	WL	WALL CONNECTION	CL.	CEILING CONNECTION; FROM ABOVE
⊕ QUAD.	QUAD RECEPTACLE	⊠ DATA		+CLG	ABOVE CEILING
⬤ SR.	SINGLE RECEPTACLE (208v.)			SU.	STUB UP
⊙ JB.	JUNCTION BOX			AFF.	ABOVE FINISHED FLOOR
\$	WALL SWITCH			HP.	HORSEPOWER
NIKEC.	NOT IN KITCHEN EQUIPMENT CONTRACT			OOW	OUT OF WALL
AMP.	AMPERES				

NOTE:

CONNECTIONS SHOWN REFLECT ONLY THE REQUIREMENTS OF THE FOODSERVICE EQUIPMENT PACKAGE TO BE SUPPLIED BY F.E.C. ANY ADDITIONAL REQUIREMENTS, SUCH AS BUT NOT LIMITED TO GENERAL AREA LIGHTING AND OUTLETS, ELECTRIC PANELS, SAFETY DISCONNECT SWITCHES, MOTOR STARTERS, CONTACTS, ETC.. SHALL BE SPECIFIED, LOCATED AND SUPPLIED BY OTHERS. LIKEWISE, ALL FINAL CONNECTIONS AND HOOK--UPS, INCLUDING ALL INTERWIRING BETWEEN COMPONENTS AND CONTROL PANELS, WALK--IN FREEZERS, DEFROST CYCLE INTERWIRING, AND ANY CORD & PLUG SETS NOT SUPPLIED BY FACTORIES AS PART OF STANDARD EQUIPMENT PACKAGE, SHALL ALSO BE BY OTHERS. ALL DIMENSIONS SHOWN ARE BASED ON UNDIMENSIONED DRAWINGS SUBMITTED TO F.E.C. AND ARE PENDING VERIFICATION IN THE FIELD; FIELD DIMENSIONS AND CONDITIONS SHALL GOVERN. NOTE 1 = NIKEC; G.C. SHALL VERIFY REQUIREMENTS WITH SUPPLIER & COORDINATE ROUGH--IN INSTALLATION WITH TRADES IN THE FIELD. NOTE 2 = REFER TO MFG SHOP DRAWINGS FOR COMPLETE WIRING REQUIREMENTS. NOTE 3 = ELECTRICAL TRADES TO PROVIDE SHUNT TRIP AS REQUIRED BY LOCAL CODES. \* VERIFY LOCATION OF CONDENSING UNIT AND JUNCTION BOX.

REV.	DATE	DESCRIPTION
1		
2		
3		
4		
5		
6		
7		
8		
9		
10		

TriMark  
Gill Group

Orlando Division - 31  
2 West Oakland Ave, Oakland FL 34760  
P-407-656-2060 F-407-656-2126  
Toll Free 866-356-1418

HYATT PLACE  
FLINT, MI

FOODSERVICE EQUIPMENT ELECTRICAL PLAN & SCHEDULE

JOB NAME:

SHEET NAME:

KEYS: 122

DRAWING BY: SB

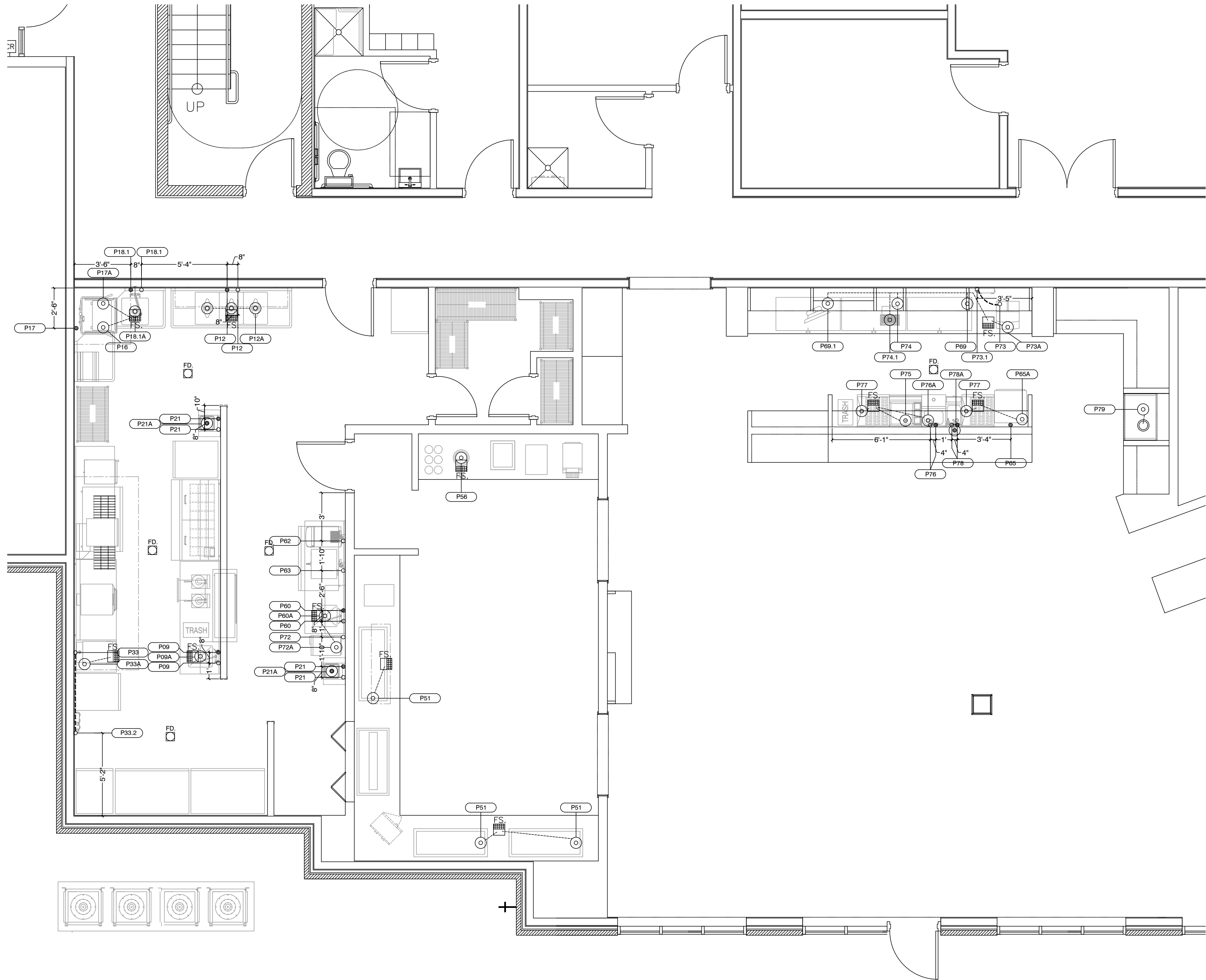
CHECKED BY: BM

ISSUE DATE: 06.06.2017

SCALE: 1/4" = 1'0"

SHEET NO.

FS2



KITCHEN PLUMBING SCHEDULE

ITEM #	EQUIPMENT	COLD WATER	HOT WATER	WASTE	GAS	DRAINS	STUB UP A.F.F.	TEE OFF TO OR RUN TO	COMMENTS
P09	PREP SINK	1/2"	1/2"				18"	OUT OF WALL	
P09A	PREP SINK			1 1/2"		I.W.		EXTEND TO F.S.	
P12	3 COMPARTMENT SINK	1/2"	1/2"				18"	OUT OF WALL	
P12A	3 COMPARTMENT SINK			2"		I.W.		EXTEND TO F.S.	P.C. TO INTERCONNECT DRAINS
P16	CONDENSATE HOOD			1"		I.W.		EXTEND TO F.S.	
P17	DISHWASHER		3/4"				18"		PC TO SUPPLY MIN 140 DEG.
P17A	DISHWASHER			2"		I.W.		EXTEND TO F.S.	
P18.1	PRE-RINSE	1/2"	1/2"				18"	OUT OF WALL	
P18.1A	PRE-RINSE			1 1/2"		I.W.		EXTEND TO F.S.	
P21	HAND SINK (2)	1/2"	1/2"				18"		SEE DETAIL 1
P21A	HAND SINK (2)			1 1/2"		D.W.	20"		SEE DETAIL 1
P33	STEAMER	1/2"							FROM P33.2 WATER FILTER
P33A	STEAMER			1"		I.W.		EXTEND TO F.S.	
P33.2	WATER FILTER	3/4"					66"	OUT OF WALL	TEE OFF TO #33 STEAMER
P51	FROST TOP (3)			1"		I.W.		EXTEND TO F.S.	
P56	FOOD WARMER			1/2"		I.W.		EXTEND TO F.S.	PLUMBER TO SUPPLY SHUT OFF VALVE
P60	PREP SINK	1/2"	1/2"				18"	OUT OF WALL	
P60A	PREP SINK			1 1/2"		I.W.		EXTEND TO F.S.	
P62	JUICE	1/2"					48"	OUT OF WALL	BRANCH FROM ITEM 62.1 WATER FILTER
P63	COFFEE BREWER	1/2"					48"	OUT OF WALL	BRANCH FROM ITEM 63.1 WATER FILTER
P65	GLASSWASHER			3/4"			10"		PC TO PROVIDE 140 DEG H.W. MIN @ 20 -22 PSI FLOW PRESSURE
P65A	GLASSWASHER			1 1/2"		I.W.		EXTEND TO F.S.	
P69	BACKBAR REFRIGERATOR			1"		I.W.		EXTEND TO F.S.	
P69.1	BACKBAR REFRIGERATOR			1"		I.W.		EXTEND TO F.S.	
P72	ICE MACHINE	1/2"					18"	OUT OF WALL	
P72A	ICE MACHINE			3/4"				EXTEND TO F.S.	
P73	ESPRESSO	1/2"							BRANCH FROM ITEM 73.1 WATER FILTER
P73A	ESPRESSO			1"		I.W.		EXTEND TO F.S.	
P73.1	ESPRESSO FILTER	1/2"					18"	OUT OF WALL	BRANCH TO ESPRESSO
P74	BACKBAR REFRIGERATOR			1"		I.W.		EXTEND TO F.S.	
P74.1	BEER DRAINER			1"		I.W.		EXTEND TO F.S.	
P75	ICE CHEST			1/2"		I.W.		EXTEND TO F.S.	
P76	DUMP SINK	1/2"	1/2"				10"		
P76A	DUMP SINK			1 1/2"		I.W.		EXTEND TO F.S.	
P77	STORAGE W/DRAINBOARD (2)			1 1/2"		I.W.		EXTEND TO F.S.	
P78	HAND SINK	1/2"	1/2"				10"		
P78A	HAND SINK			1 1/2"		D.W.	14"		
P79	REFRIGERATED CASE			3/4"		I.W.		EXTEND TO H.D.	

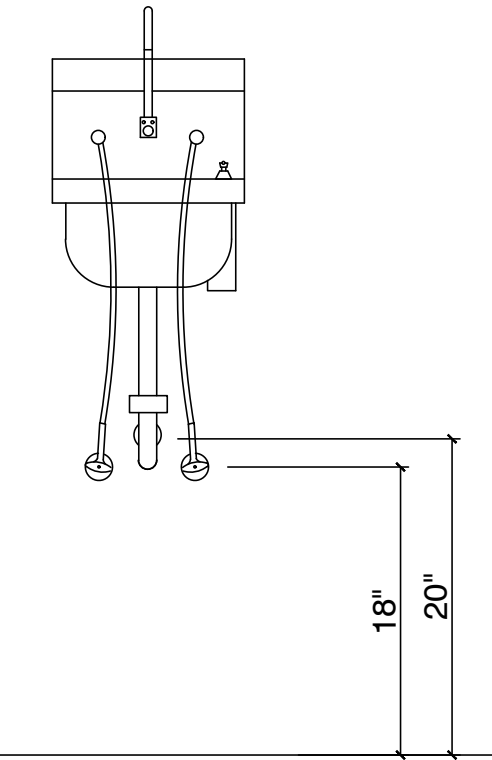
SYMBOLS AND NOTES

- CW. COLD WATER
  - HW. HOT WATER
  - ⊙ IW. INDIRECT WASTE
  - ⊙ W. WASTE
  - FS. FLOOR SINK
  - FFD. FUNNEL FLOOR DRAIN
  - FD. FLOOR DRAIN
  - HUB DRAIN.
- ⊕ GAS
  - NIKEC. NOT IN KITCHEN EQUIPMENT CONTRACT
  - WL. WALL CONNECTION
  - CL. CEILING CONNECTION FROM ABOVE
  - SU. STUB UP
  - A.F.F. ABOVE FINISHED FLOOR
  - B.T.C. BRANCH TO CONNECTION

NOTES! CONNECTIONS SHOWN REFLECT ONLY THE REQUIREMENTS OF THE FOODSERVICE EQUIP. PACKAGE TO BE SUPPLIED BY F.E.C.. ANY ADDITIONAL REQUIREMENTS, SUCH AS BUT NOT LIMITED TO GENERAL AREA FLOOR DRAINS AND SINKS, SANITARY FIXTURE CONNECTIONS, GREASE TRAPS, GAS MANIFOLDS, VALVES AND FITTINGS, ETC... SHALL BE SPECIFIED, LOCATED AND SUPPLIED BY OTHERS. LIKEWISE, ALL FINAL CONNECTIONS AND HOOK-UPS, INCLUDING ALL INDIRECT WASTE LINES RUNNING FROM EQUIPMENT TO FLOOR DRAINS AND/OR SINKS, CONDENSATE DRAIN LINES ETC... SHALL ALSO BE BY OTHERS. ALL DIMENSIONS SHOWN ARE BASED ON UN-DIMENSIONED DRAWINGS SUBMITTED TO F.E.C. AND ARE PENDING VERIFICATION IN THE FIELD; FIELD DIMENSIONS AND CONDITIONS SHALL GOVERN.

- NOTE 1 = NIKEC; G.C. SHALL VERIFY REQUIREMENTS WITH SUPPLIER & COORDINATE ROUGH-IN INSTALLATION WITH TRADES IN THE FIELD.
- NOTE 2 = MECH. CONT'R TO BRANCH DOWN WALL FROM CL., THRU GAS VALVE, AND HORIZONTALLY ACROSS WALL AS REQ'D. VERIFY INDIVIDUAL ITEM BTU REQUIREMENT W/ SCHEDULE.

DETAIL 1  
HAND SINK ELEVATION



JOB NAME:

HYATT PLACE  
FLINT, MI

Orlando Division - 31  
2 West Oakland Ave, Oakland FL 34760  
P - 407 - 656 - 2060 F - 407 - 656 - 2126  
Toll Free 866.656.1418



REV. DATE DESCRIPTION

REV.	DATE	DESCRIPTION
1		
2		
3		
4		
5		
6		
7		
8		
9		
10		

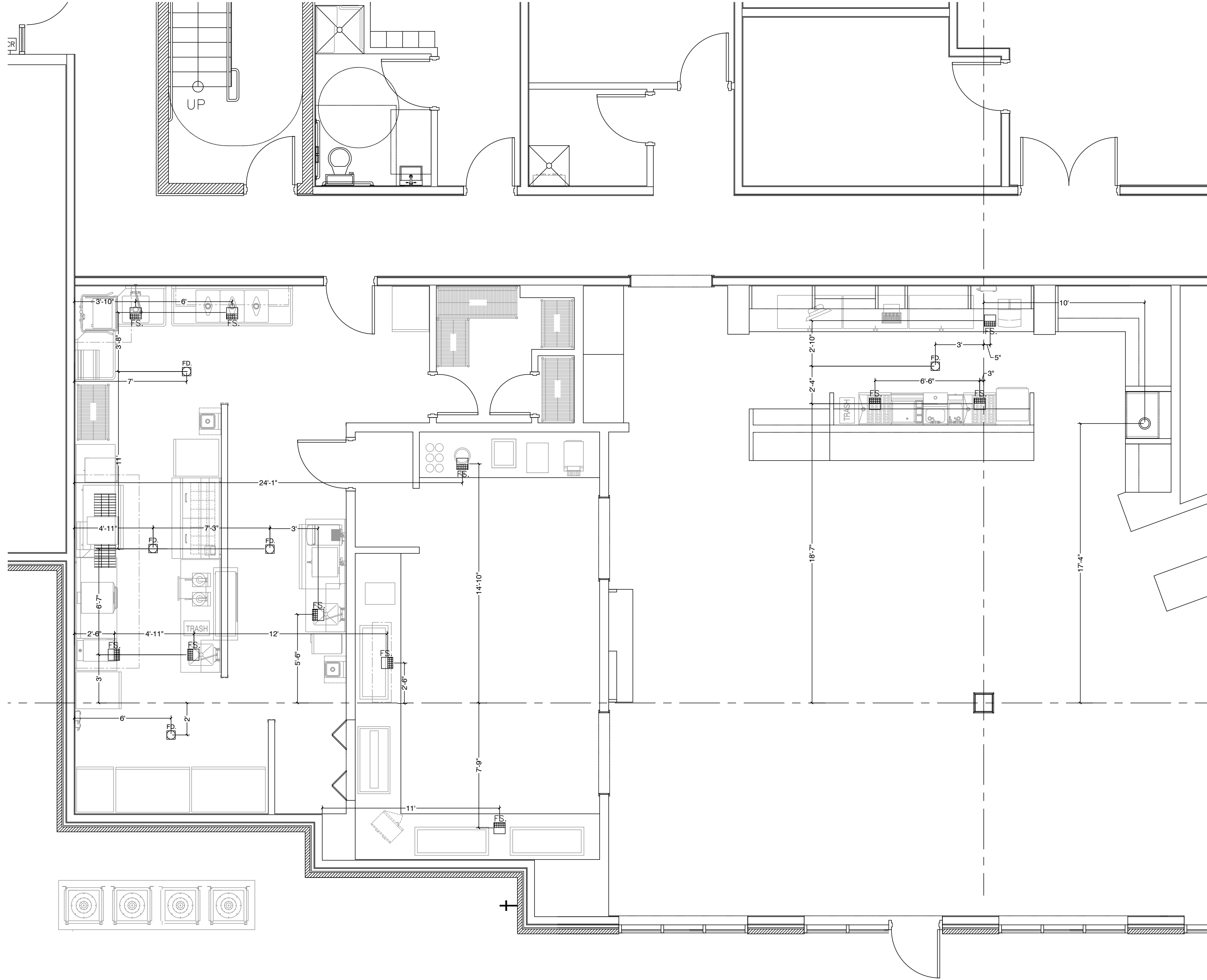
KEYS: 122  
DRAWING BY: SB  
CHECKED BY: BM  
ISSUE DATE: 06.06.2017  
SCALE: 1/4" = 1'0"  
SHEET NO.

FOODSERVICE EQUIPMENT PLUMBING PLAN & SCHEDULE

SHEET NAME:

REV.	DATE	DESCRIPTION
1		
2		
3		
4		
5		
6		
7		
8		
9		
10		

FS3



JOB NAME:

# HYATT PLACE FLINT, MI

FOODSERVICE EQUIPMENT DRAIN PLAN

KEYS: 122

DRAWING BY: SB

CHECKED BY: BM

ISSUE DATE: 06.06.2017

SCALE: 1/4" = 1'0"

SHEET NO.

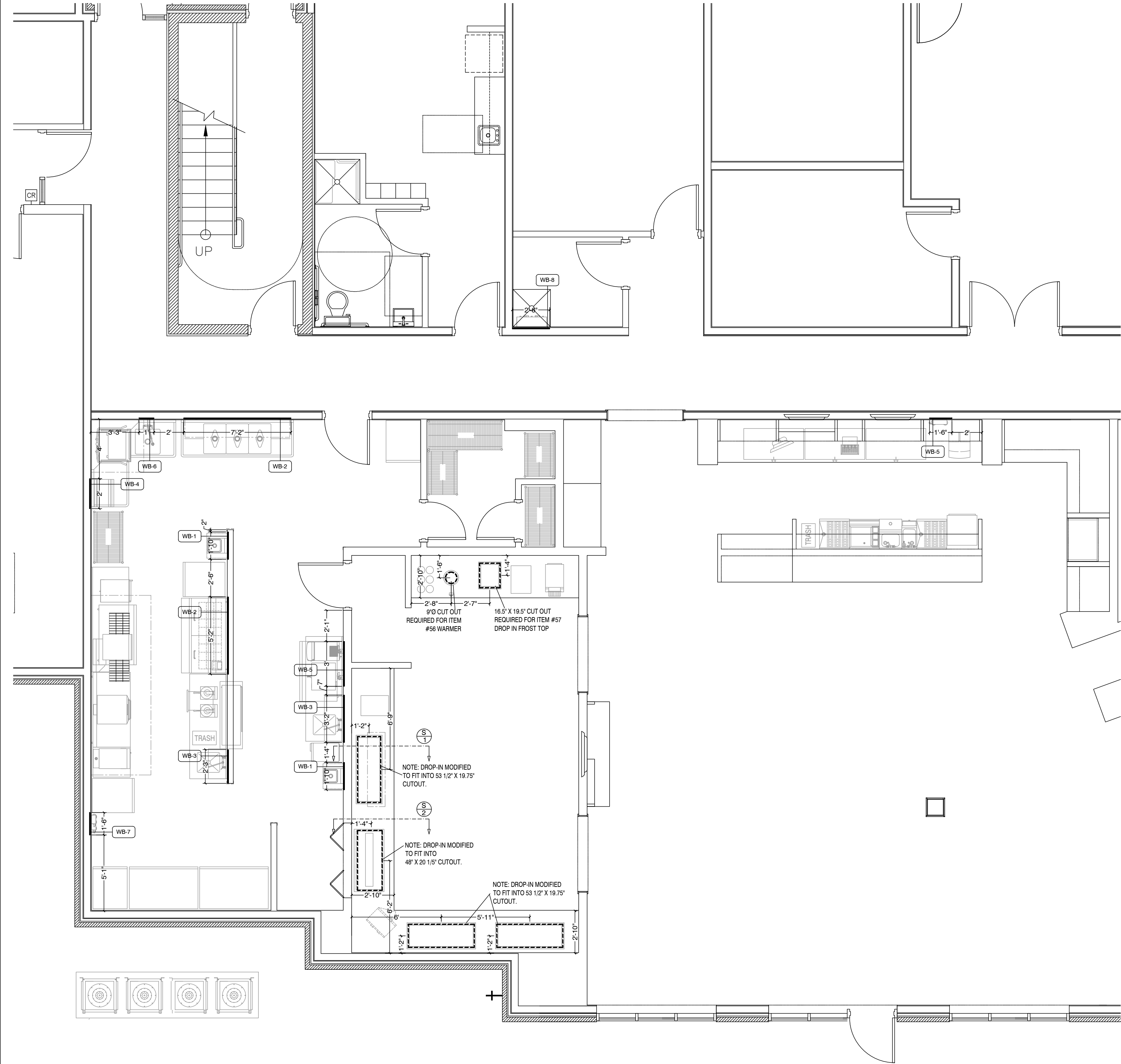
FS3.1



**TriMark**  
Gill Group

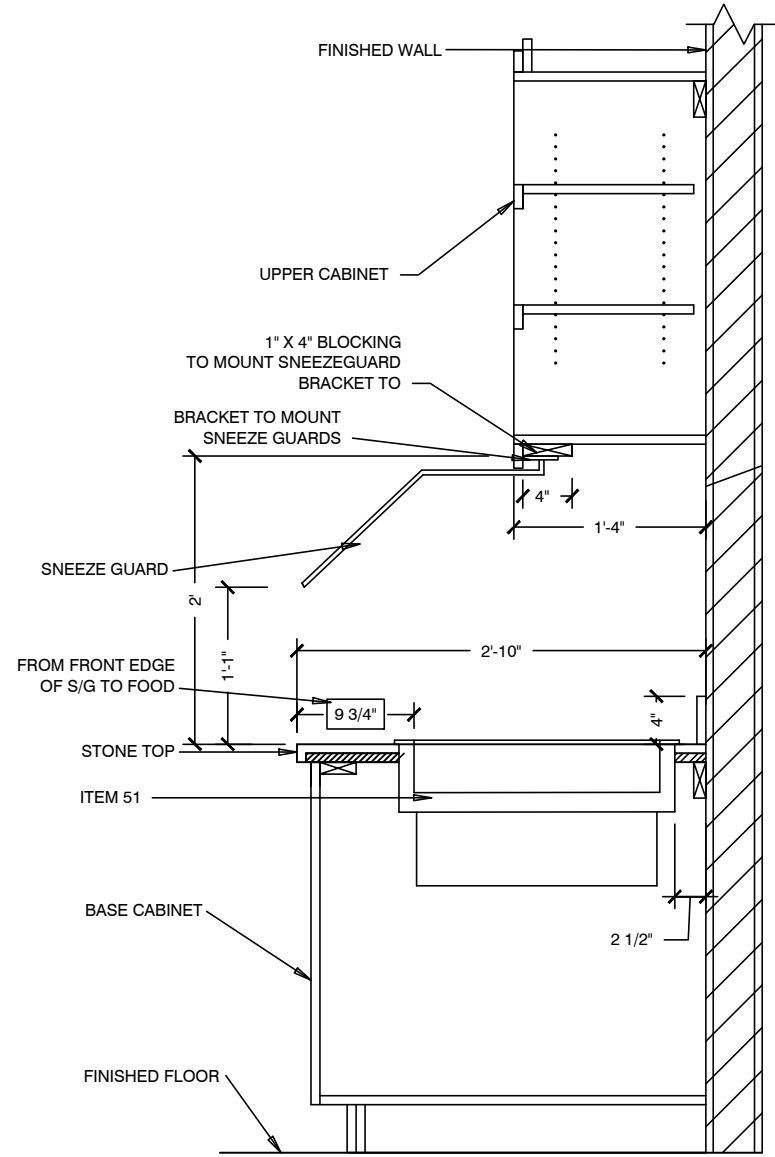
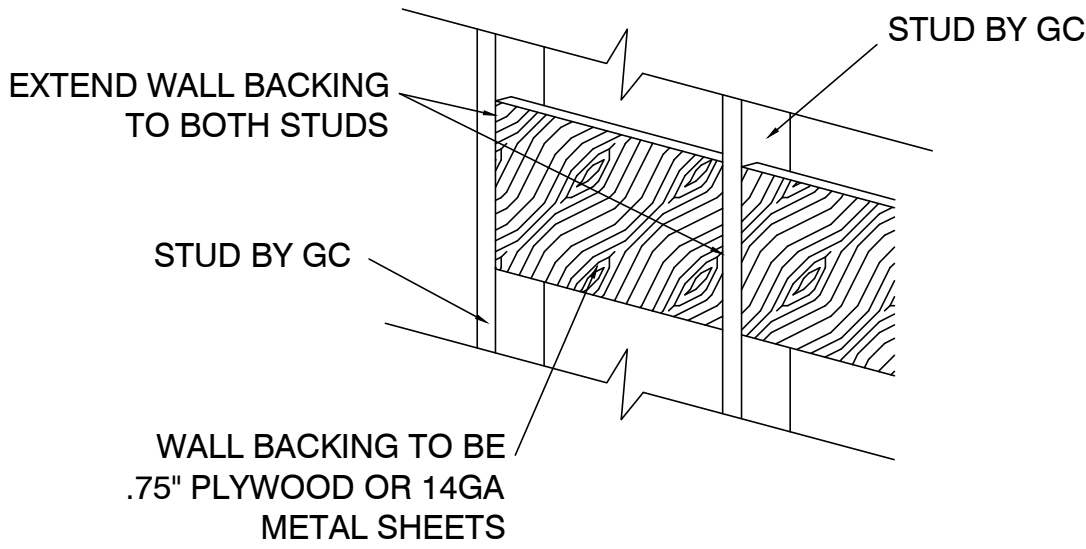
Orlando Division - 31  
2 West Oakland Ave, Oakland FL 34760  
P - 407.656.2060 F - 407.656.2126  
Toll Free 866.856.1418

REV.	DATE	DESCRIPTION
1		
2		
3		
4		
5		
6		
7		
8		
9		
10		

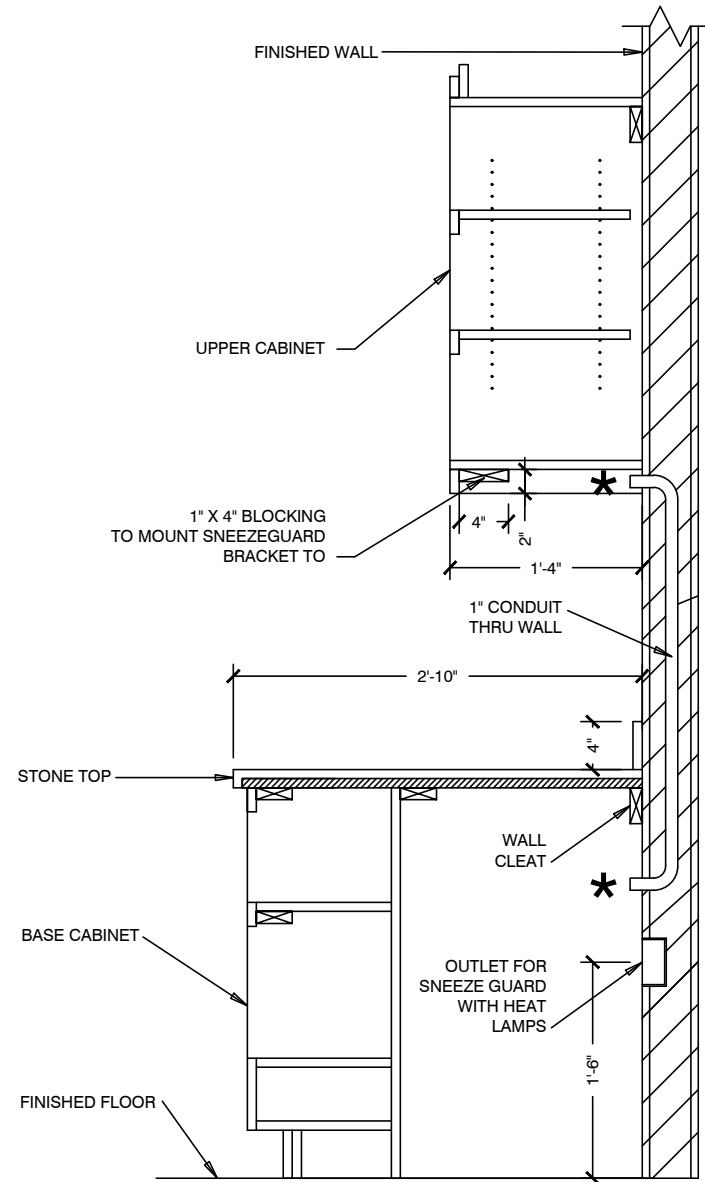


WALL BACKING

- WB-1 = WALL BACKING FROM 30" TO 66" A.F.F. - .75" PLYWOOD - HAND SINK
- WB-2 = WALL BACKING FROM 50" TO 78" A.F.F. - .75" PLYWOOD - DOUBLE WALL SHELVES AND POT RACK/SHELF
- WB-3 = WALL BACKING FROM 50" TO 66" A.F.F. - .75" PLYWOOD - SINGLE WALL SHELF
- WB-4 = WALL BACKING FROM 48" TO 72" A.F.F. - .75" PLYWOOD - RACK SHELF/BEVERAGE SHELF
- WB-5 = WALL BACKING FROM 18" TO 30" A.F.F. - .75" PLYWOOD - UNDERCOUNTER WATER FILTER
- WB-6 = WALL BACKING FROM 50" TO 60" A.F.F. - .75" PLYWOOD - PRE-RINSE BRACKET
- WB-7 = WALL BACKING FROM 48" TO 96" A.F.F. - .75" PLYWOOD - WATER FILTER
- WB-8 = WALL BACKING FROM 60" TO 84" A.F.F. - .75" PLYWOOD - MOP RACK



SECTION #1  
SCALE: 3/4" = 1'-0"



SECTION #2  
SCALE: 3/4" = 1'-0"

★ PROVIDE OUTLET BOXES IF REQUIRED  
BY LOCAL CODE  
(1) 55" AFF.  
(1) 24" AFF.

HYATT PLACE  
FLINT, MI

TriMark  
Gill Group

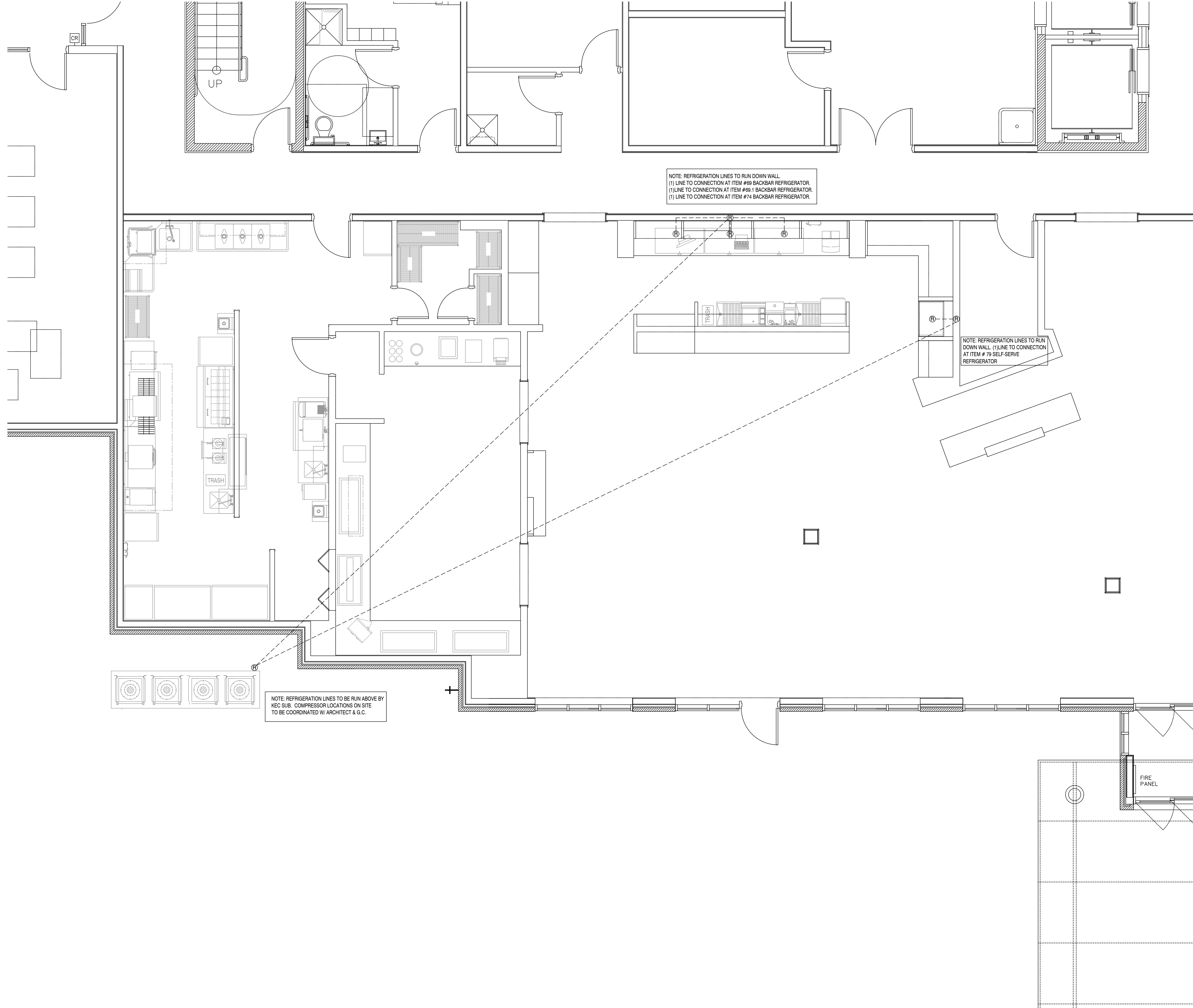
Orlando Division - 31  
2 West Oakland Ave, Oakland FL 34760  
P - 407.656.2060 F - 407.656.2126  
Toll Free 866.856.1418

JOB NAME:  
DRAWING BY: SB  
CHECKED BY: BM  
ISSUE DATE: 06.06.2017  
SCALE: 1/4" = 1'0"  
SHEET NO.


FOODSERVICE EQUIPMENT WALL BACKING PLAN

FS4





REV.	DATE	DESCRIPTION
1		
2		
3		
4		
5		
6		
7		
8		
9		
10		

**TriMark**  
Gill Group

Orlando Division - 31  
2 West Oakland Ave, Oakland FL 34760  
P - 407.656.2060 F - 407.656.2126  
Toll Free 866.856.1418

**HYATT PLACE**  
FLINT, MI

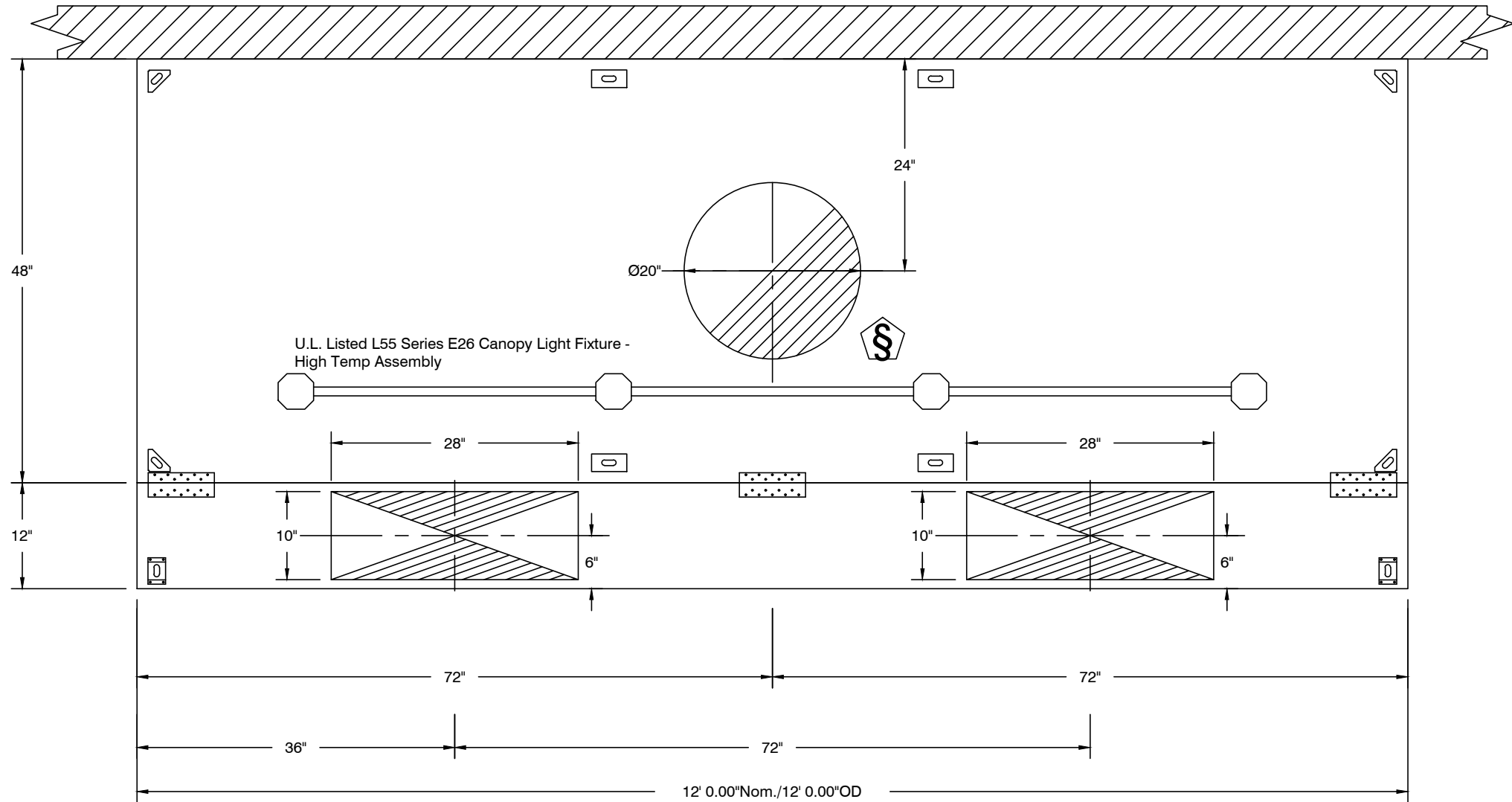
FOODSERVICE EQUIPMENT REFRIGERATION PLAN

JOB NAME:  
KEYS: 122  
DRAWING BY: SB  
CHECKED BY: BM  
ISSUE DATE: 06.06.2017  
SCALE: 1/4" = 1'0"  
SHEET NO.

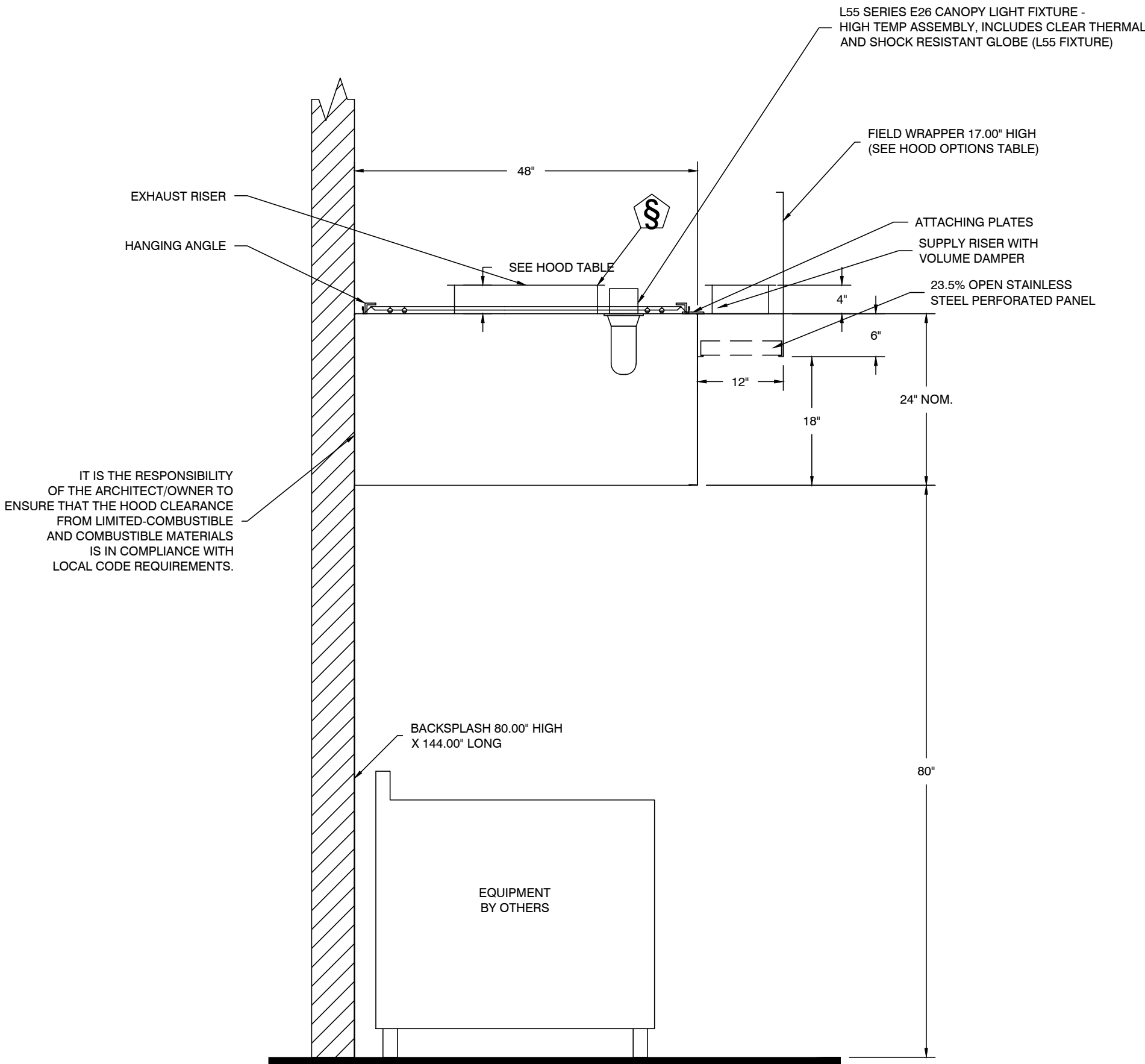
FS5

HOOD INFORMATION - Job#3034496

HOOD NO.	TAG	MODEL	LENGTH	MAX COOKING TEMP.	EXHAUST PLENUM RISER(S)								TOTAL SUPPLY CFM	HOOD CONSTRUCTION	HOOD CONFIG.	
					TOTAL EXH. CFM	WIDTH	LENG.	HEIGHT	DIA.	CFM	VEL.	S.P.			END TO END	ROW
1	ITEM 24	4824 VHB-PSP-F	12' 0.00"	700 Deg.	1800			4"	20"	1800	825	-0.104"	1440	430 SS 100%	ALONE	ALONE
2	ITEM 16	4224 VHB-G	3' 6.00"	700 Deg.	525			4"	10"	525	963	-0.069"	0	430 SS 100%	ALONE	ALONE



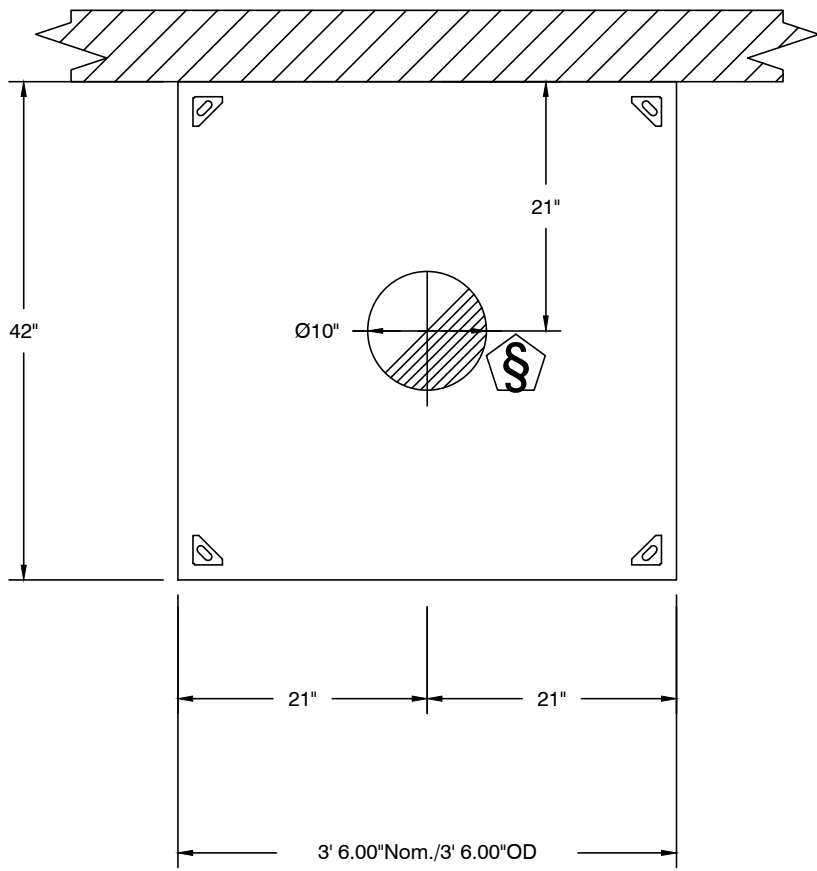
PLAN VIEW - Hood #1 (ITEM 24)  
12' 0.00\"/>



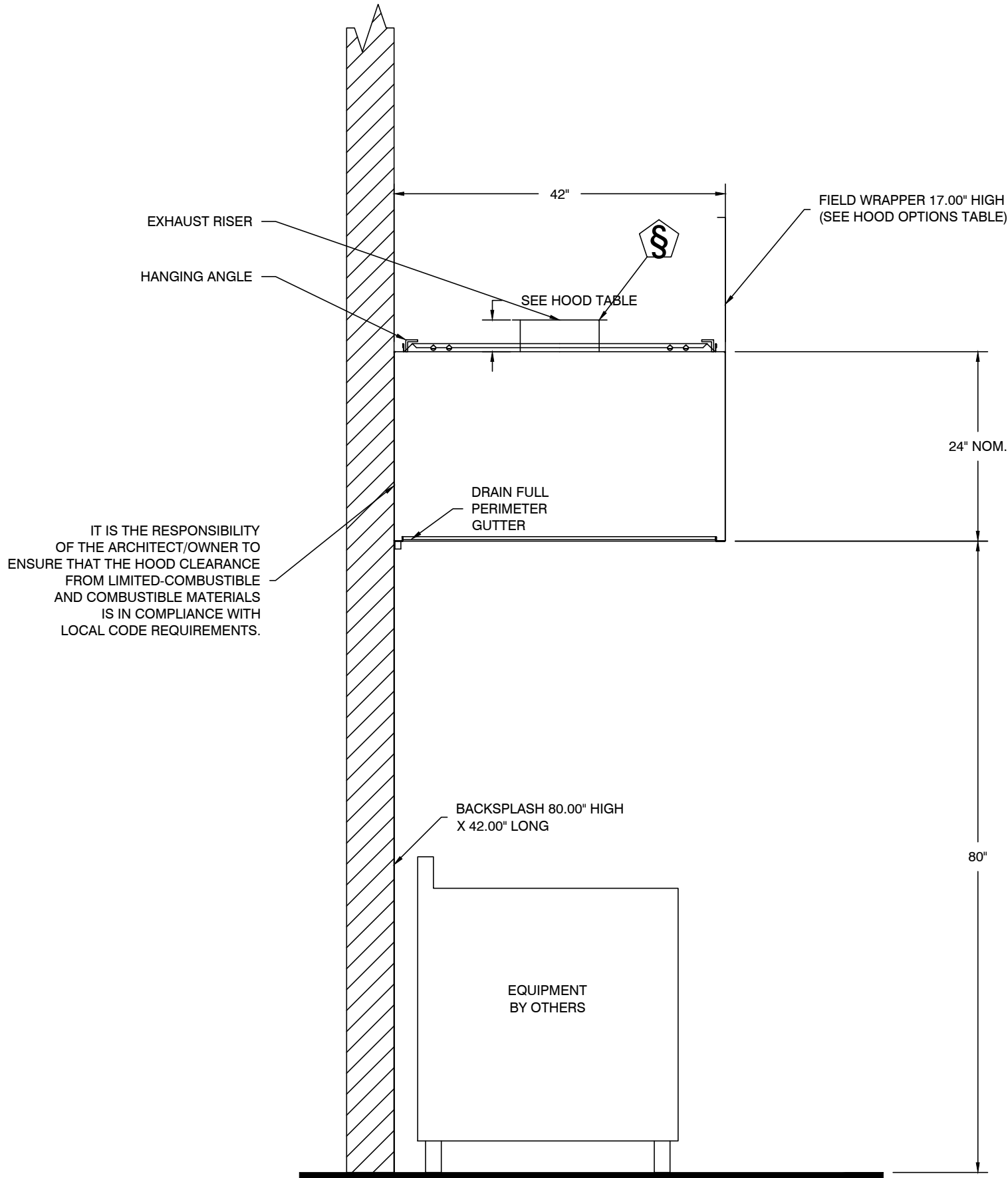
SECTION VIEW - MODEL 4824VHB-PSP-F  
HOOD - #1 (ITEM 24)

HOOD INFORMATION

HOOD NO.	TAG	FILTER(S)				LIGHT(S)			UTILITY CABINET(S)				FIRE SYSTEM PIPING	HOOD HANGING WGHT
		TYPE	QTY.	HEIGHT	LENGTH	EFFICIENCY @ 7 MICRONS	QTY.	TYPE	WIRE GUARD	LOCATION	SIZE	FIRE SYSTEM TYPE		
1	ITEM 24						4	L55 Series E26	NO				NO	440 LBS
2	ITEM 16						0						NO	159 LBS



PLAN VIEW - Hood #2 (ITEM 16)  
3' 6.00\"/>



SECTION VIEW - MODEL 4224VHB-G  
HOOD - #2 (ITEM 16)

REVISIONS

DESCRIPTION	DATE:

Central Florida Office

PO Box 917396, Longwood, FL 32791-7396 PHONE: (407) 682-0317 FAX: (407) 772-0623 EMAIL: Scott.Townes@captiveaire.com

HYATT PLACE FLINT, MI  
FLINT, MI, 48553

DATE: 5/30/2017  
DWG.#: 3034496  
DRAWN BY: SPT  
SCALE: 3/4" = 1'-0"  
MASTER DRAWING

SHEET NO. 1

TriMark Gill Group

Orlando Division - 31  
2 West Oakland Ave, Oakland FL 34760  
P-407-556-2060 F-407-656-2156  
Toll Free 866.556-1418

HYATT PLACE  
FLINT, MI  
EXHAUST HOOD DETAILS

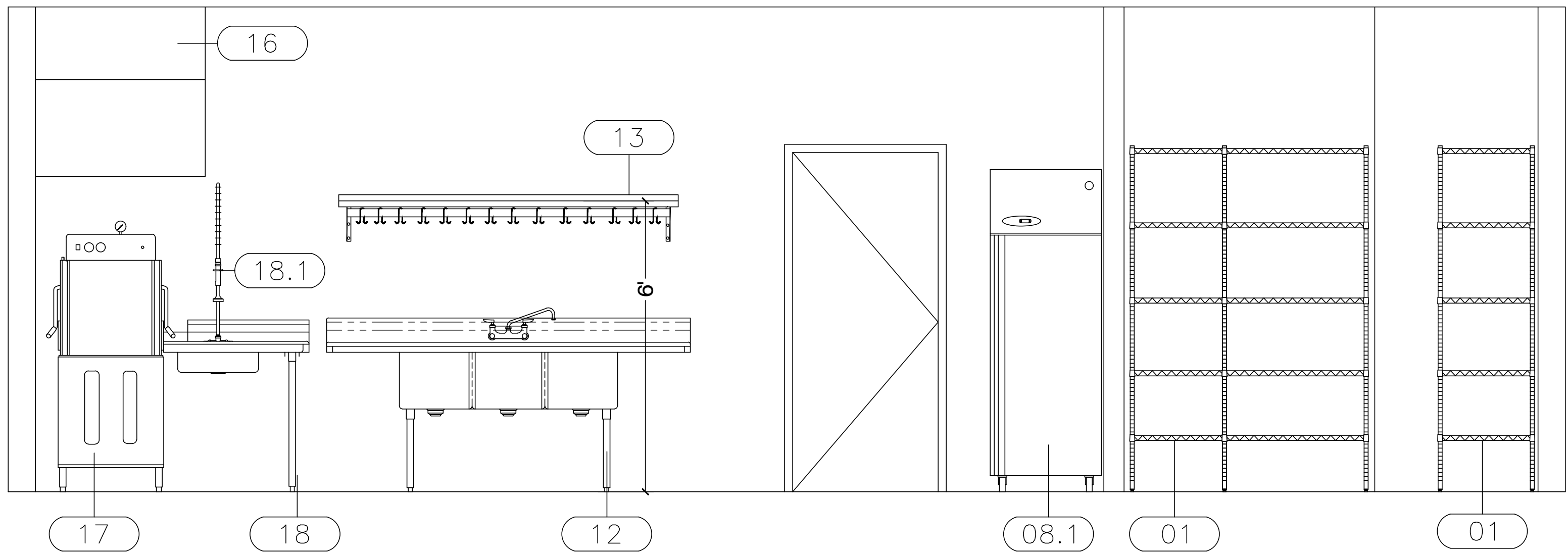
JOB NAME: SHEET NAME:

KEYS: 122  
DRAWING BY: SB  
CHECKED BY: BM  
ISSUE DATE: 06.06.2017  
SCALE: NONE  
SHEET NO.

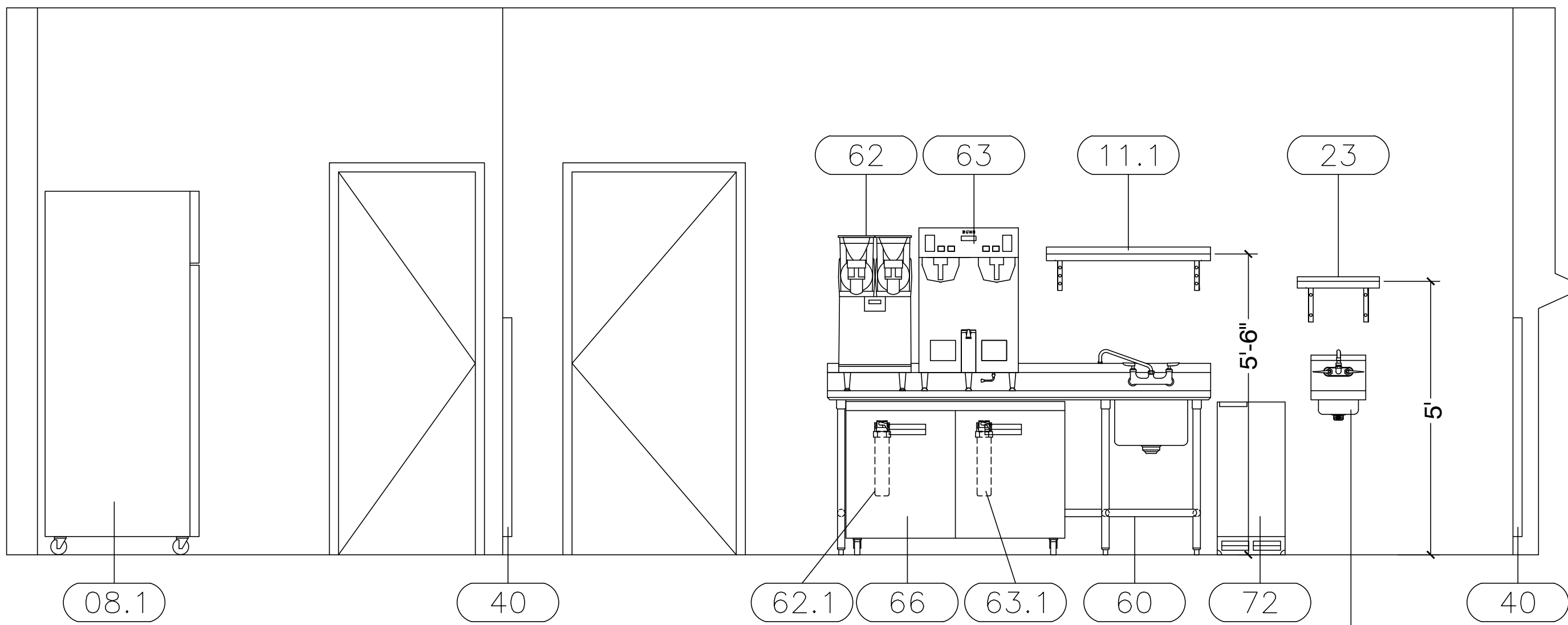
FS6



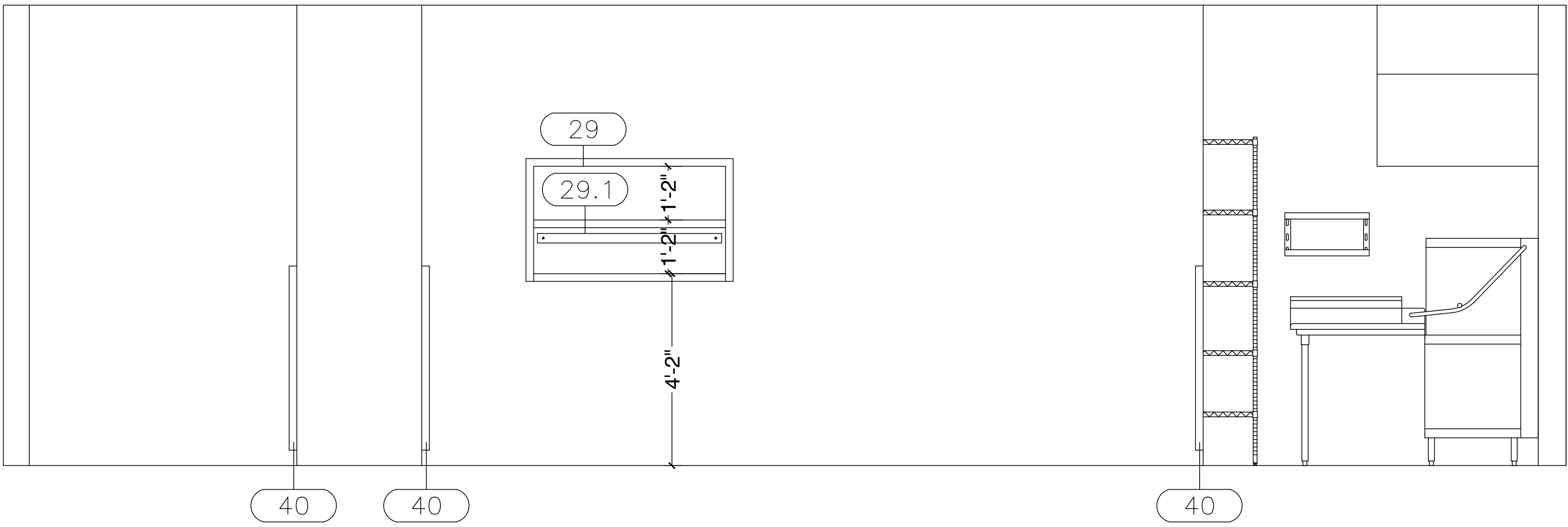




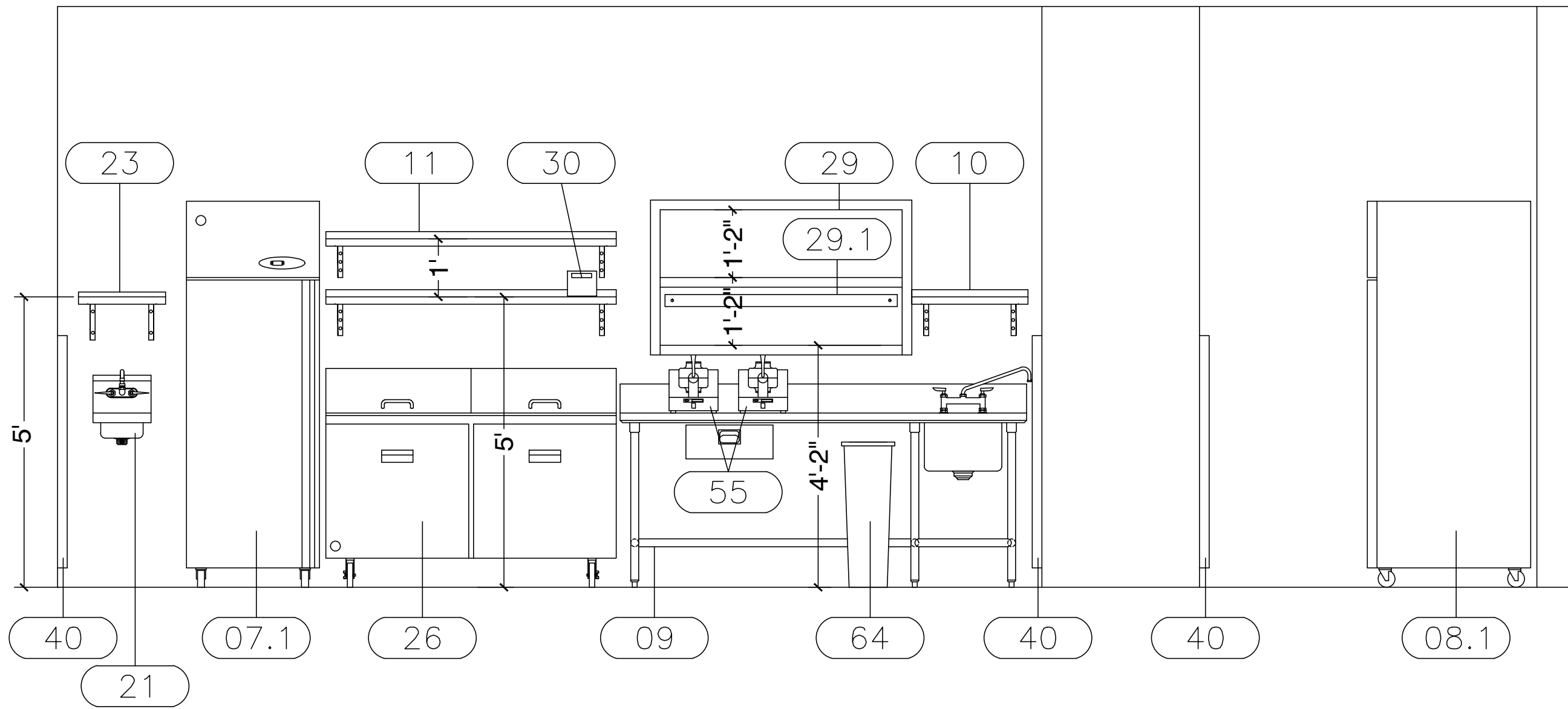
ELEVATION A  
1/2" = 1'0"



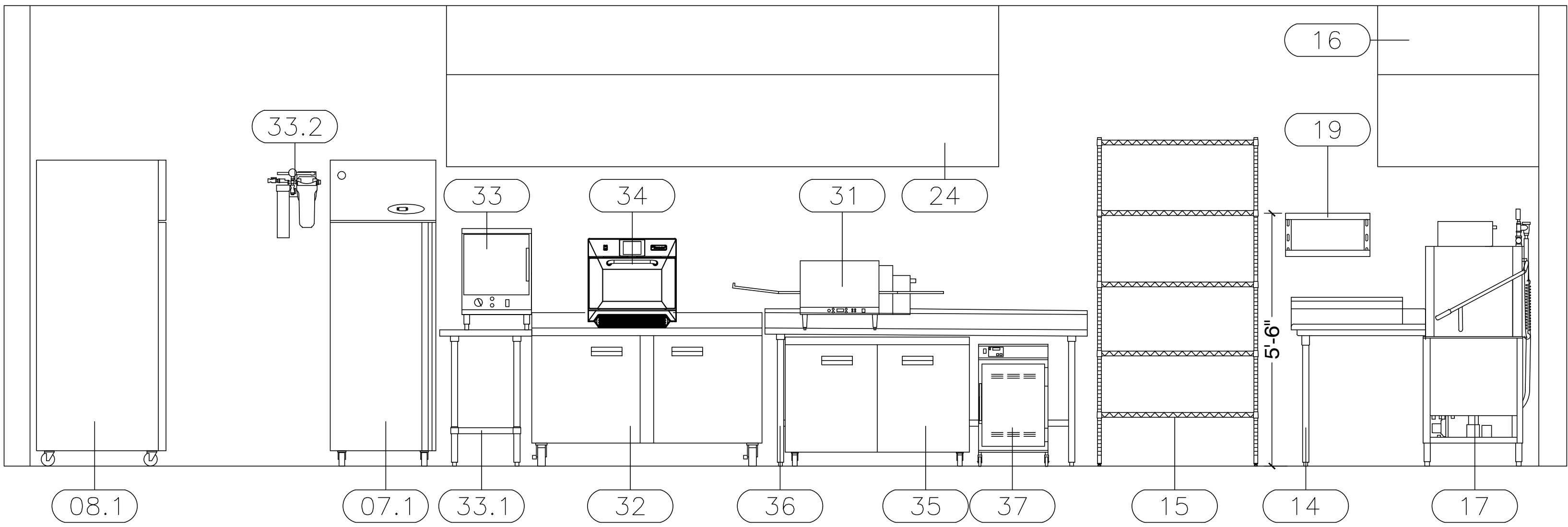
ELEVATION B  
1/2" = 1'0"



ELEVATION C  
1/2" = 1'0"




ELEVATION D  
1/2" = 1'0"



ELEVATION E  
1/2" = 1'0"

REV.	DATE	DESCRIPTION
1		
2		
3		
4		
5		
6		
7		
8		
9		
10		

**TriMark**  
Gill Group

Orlando Division - 31  
2 West Oakland Ave, Oakland FL 34760  
P - 407.656.2060 F - 407.656.2126  
Toll Free 866.856.1418

**HYATT PLACE**  
FLINT, MI

FOODSERVICE EQUIPMENT ELEVATIONS

JOB NAME:

DRAWING BY: SB

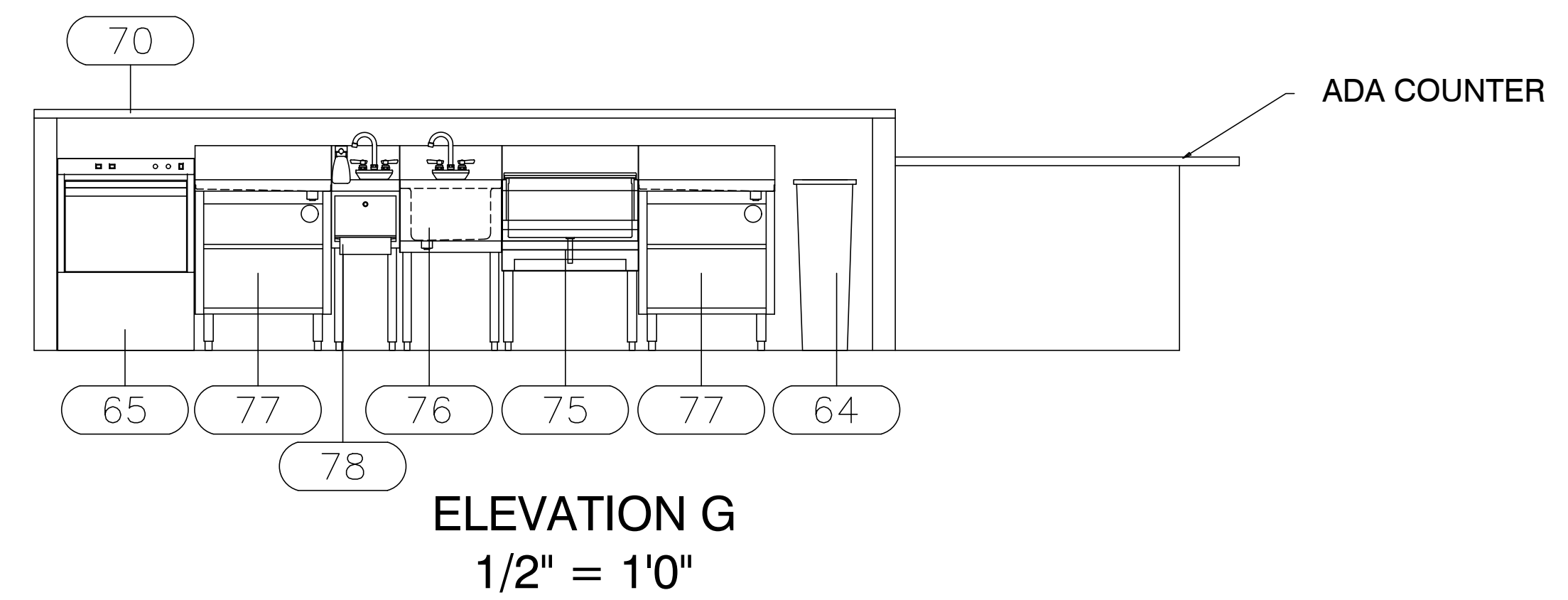
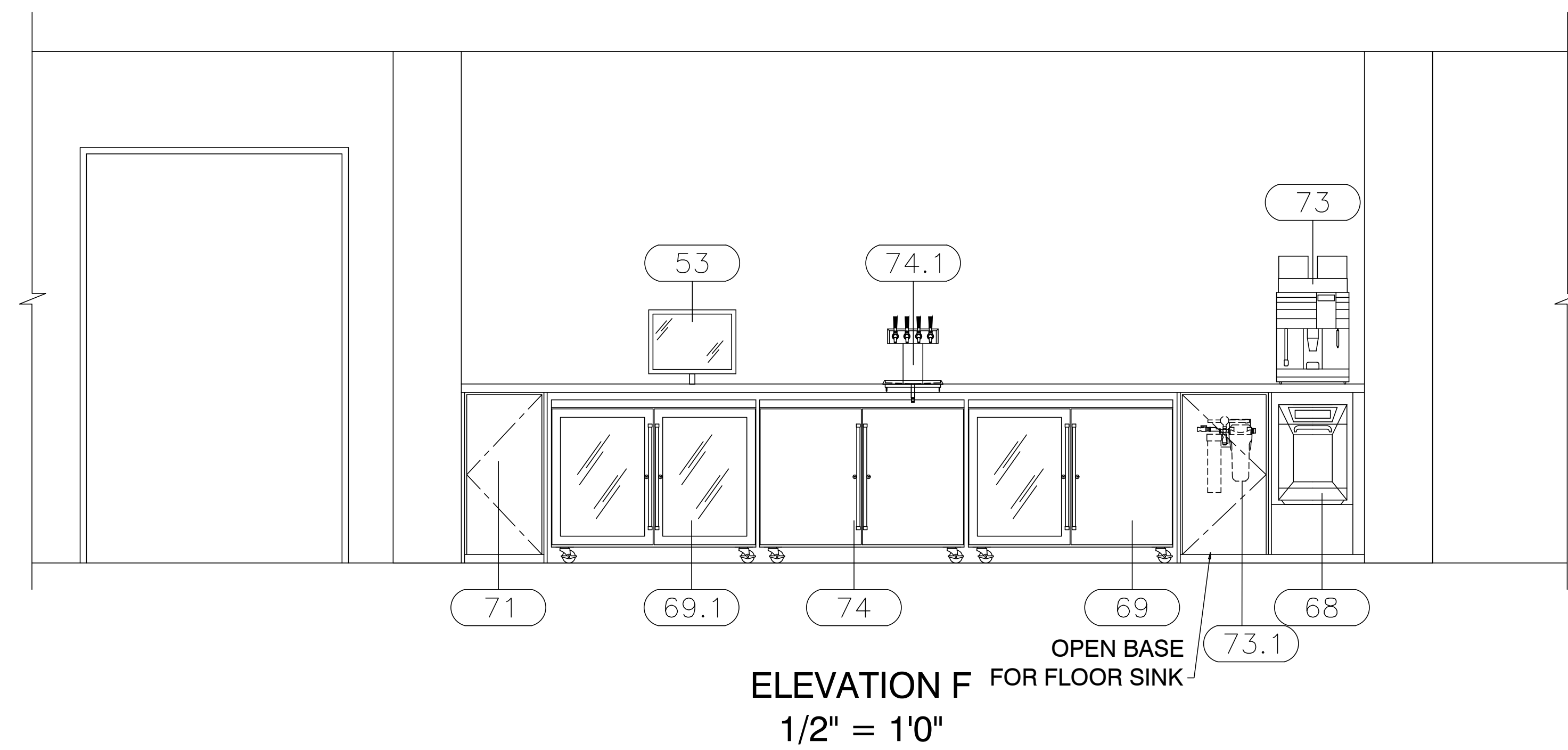
CHECKED BY: BM

ISSUE DATE: 06.06.2017

SCALE: 1/2" = 1'0"

SHEET NO.

FS8

[illegible]

**TriMark**  
Gill Group

Orlando Division - 31  
2 West Oakland Ave, Oakland FL 32760  
P - 407 - 656.2060 F - 407 - 656.2166  
Toll Free 866.856.1418

**HYATT PLACE**

FLINT, MI

SHEET NAME: FOODSERVICE EQUIPMENT ELEVATIONS

CYC'S: 122
DRAWING BY: SB
CHECKED BY: BM
ISSUE DATE: 06.06.2017
SCALE: 1/2" = 1'0"
SHEET NO.

# FS8.1